

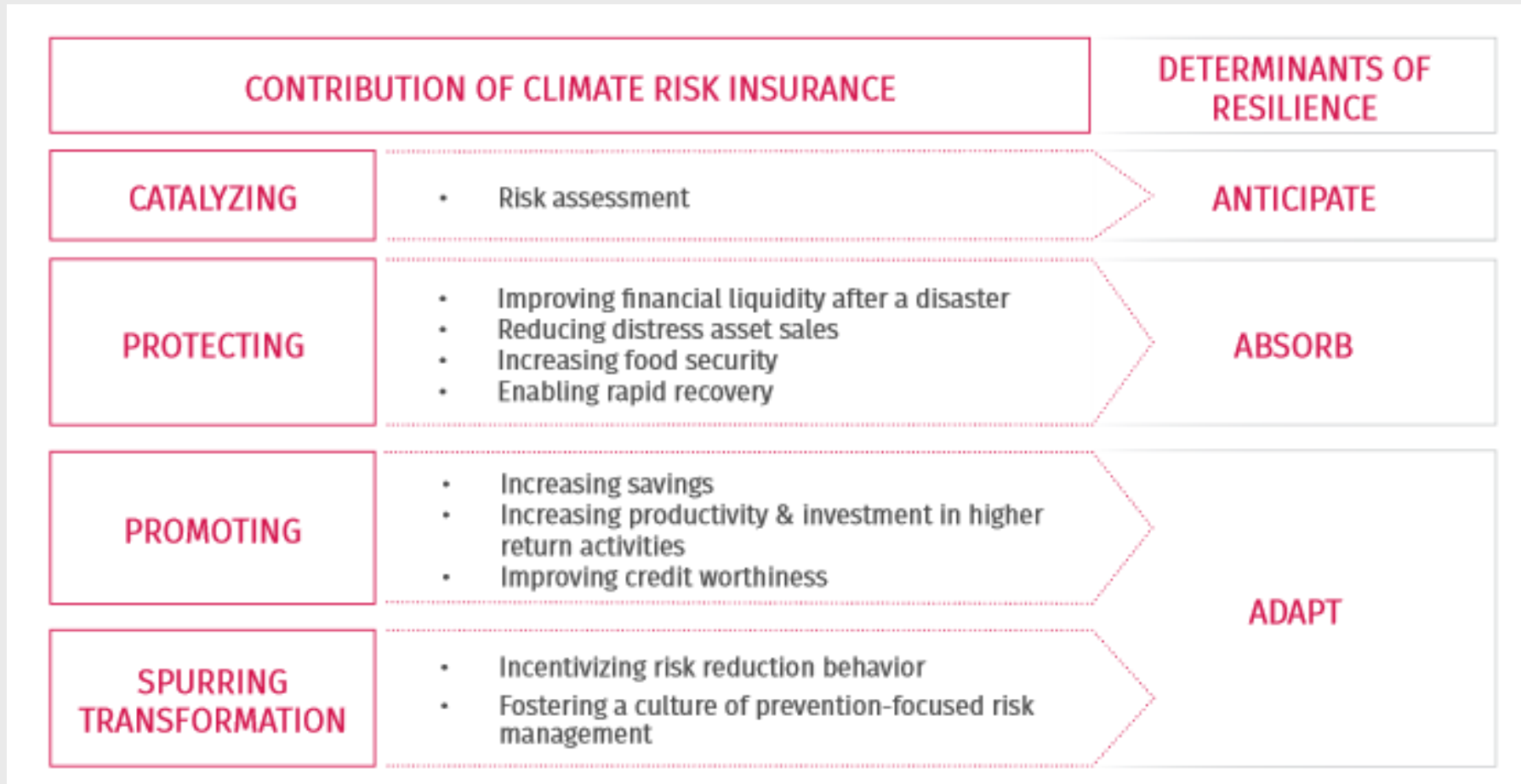
# How to make insurance work for the most vulnerable: Seven guiding principles

Laura Schäfer, Research Associate

Munich Climate Insurance Initiative  
hosted at UNU-EHS

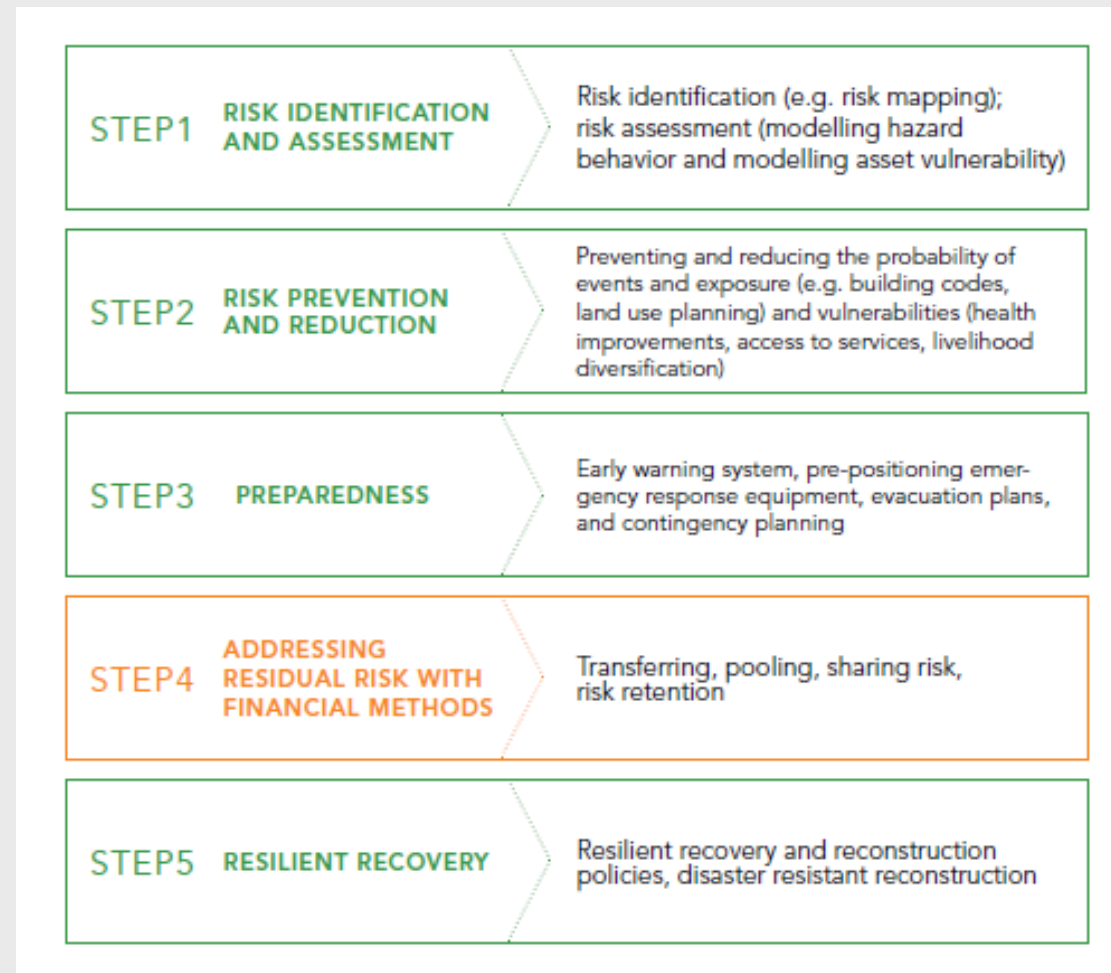


# The potential of climate risk insurance



Source: MCII Research Report 2016: Climate Risk Insurance for the Poor and Vulnerable

# The role of insurance in comprehensive risk management



Source: Modified from World Bank (2015)

# MCII's Pro-Poor Principles for Climate Risk Insurance



**Thank you for your attention!**

**Questions?**

Laura Schäfer

Research Associate at MCII hostet at UNU-EHS

[schaefer@unu.ehs.edu](mailto:schaefer@unu.ehs.edu)