

**G7 InsuResilience
Initiative—opportunity
to catalyse virtuous
cycle of resilience for
the poor**

Dr. Koko Warner
Executive Director,
Munich Climate Insurance Initiative
(MCII)





Climate risk insurance for the poor

Success factors and enabling conditions
for “InsuResilience” – the Initiative on
Climate Risk Insurance

Findings from MCII expert interviews

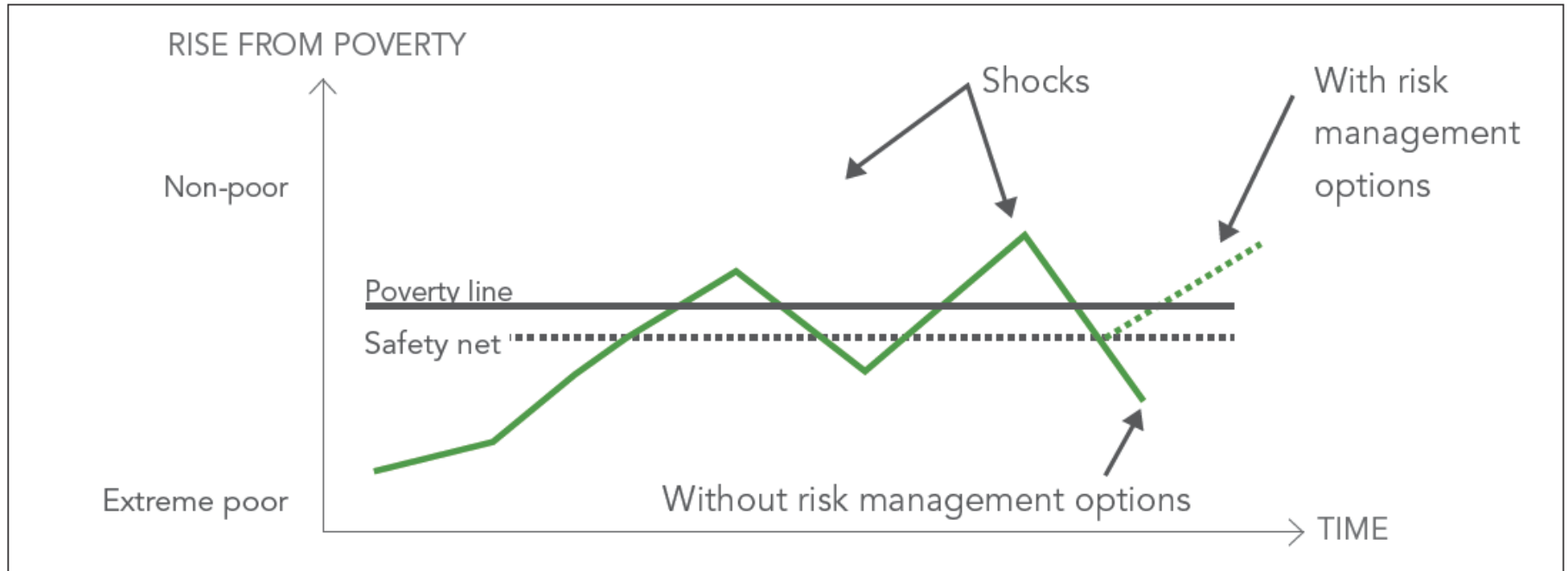


Federal Ministry
for Economic Cooperation
and Development



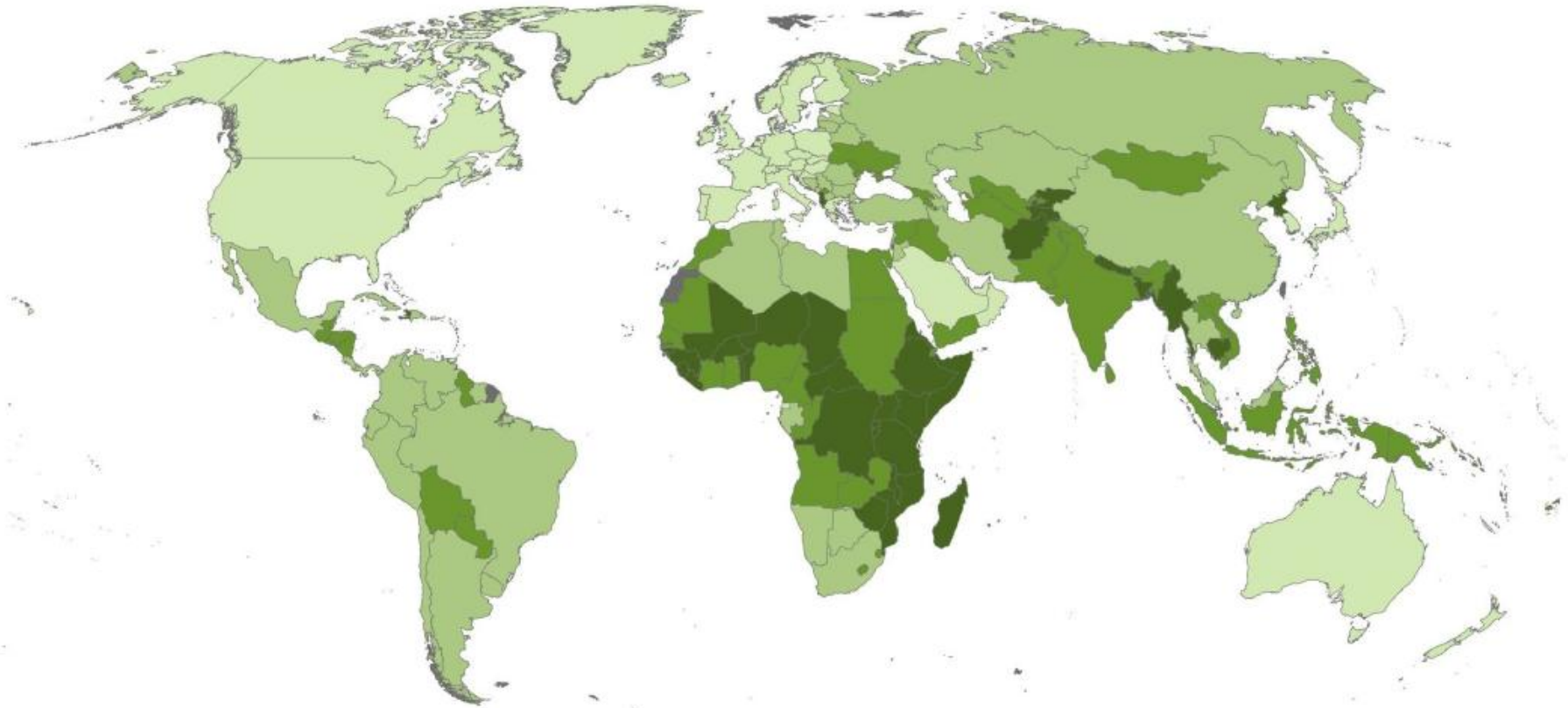
G7 GERMANY 2015

Challenge: Transforming vicious cycle of poverty to virtuous cycle of resilience



Source: Modified by MCII based on: Cohen and Sebstad (2006) in Protecting the poor: A microinsurance compendium. Volume 1. Based on McCord 2005

By 2020, InsuResilience will reach 400 Million Poor People



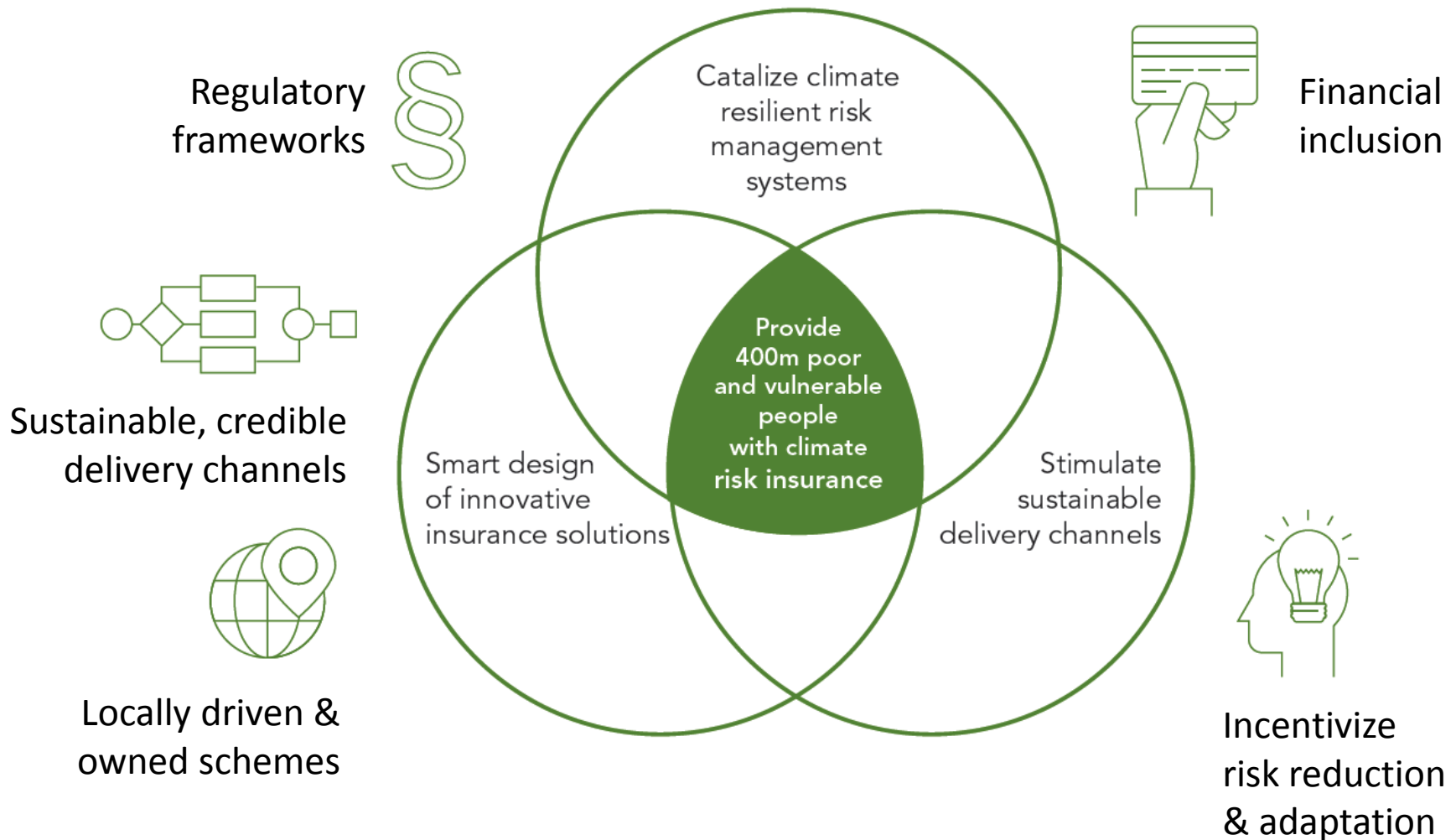
Source: World Bank Country Classification (<http://data.worldbank.org/about/country-classifications/country-and-lending-groups>)

 No data

Income Groups 2012 (defined by World Bank, Dezember 2011):



The game changer: Enabling climate-resilient pathways out of poverty



Thank you.

Dr. Koko Warner

Executive Director, Munich Climate Insurance Initiative

www.climate-insurance.org

Hosted at United Nations University

Institute for Environment and Human Security (UNU-EHS)

UN Campus

Platz der Vereinten Nationen 1

53113 Bonn, Germany

T: +49 228 815 0226

E: warner@ehs.unu.edu

www.ehs.unu.edu